



Advanced Environmental Instrumentation



✓ Surveyed

✓ Documented

✓ Reported

## Features and Benefits:

- Measures 0.3  $\mu\text{m}$  to 25.0  $\mu\text{m}$
- 0.1 CFM (2.83 LPM) flow rate
- Long life laser diode technology
- Measures up to 6 channels of simultaneous data
- Approximates mass concentration in  $\mu\text{g}/\text{m}^3$  with density and refractive index corrections, including **PM2.5**, **PM10** and **TSP**
- Integrated handle for one-handed operation
- Large easy-to-use icon driven color touch screen display
- Optional, direct-connect %RH, C°/F° probe available
- Stores up to 45,000 sample records, 1,000 sample locations and 50 recipes internally, broader options when connected to AdvancedSense®/Tablet
- Annotation function allows user to save 32 character notations to a sample record
- Real-Time Meter for detecting particle contamination sources
- Easy configuration and transferable from instrument to instrument
- Connect using RS-232, Ethernet, USB or (optional) Wireless 802.11 b/g, RS 485
- Displays and externally prints reports for ISO 14644-1, EU GMP Annex I and FS 209E
- Internal audible alarm
- User-definable reports
- User-selectable channel sizes
- Complies with ISO 21501-4 and JIS B9921 standards
- Seamless integration into a facility monitoring system
- Lightweight high-impact injection molded plastic enclosure
- 2 year warranty on instrument, except filters, 1 year on other accessories



# PC-3500

Handheld Particle Meters

Use the PC-3500 as a stand-alone particle meter, plug it into a sophisticated AdvancedSense®/WolfPack® system or into a mobile computer for simultaneous connection with GrayWolf's DirectSense® probes.

- The PC-3500 Handheld Particle Counter measures 0.3  $\mu\text{m}$  to 25.0  $\mu\text{m}$  with a flow rate of 0.1 CFM (2.83 LPM).
- Easy to configure, this instrument displays up to 6 user-selectable size channels as well as temperature and relative humidity.
- The PC-3500 mass concentration mode approximates density in  $\mu\text{g}/\text{m}^3$  and allows for density and refractive index corrections to ensure accuracy.
- The PC-3500 counters can be controlled and monitored remotely via web browser.
- Export data to (included) GrayWolf WolfSense® PC data-download software or view data and generate ISO 14644-1, EU GMP Annex 1 or FS 209E reports on screen or in real time through the versatile PC-3500 output options.
- The PC-3500 meets ISO 21501-4 and JIS B9921, ensuring compliance with an on-board pulse height analyzer.



GRAYWOLF®  
SENSING SOLUTIONS  
Ph. 1-203-402-0477

Email:  
Salesteam@GrayWolfSensing.com

Website:  
www.GrayWolfSensing.com



# PC-3500

## Handheld Particle Meters

<b>Size Range</b>	0.3 to 25µm
<b>Size Channels</b>	Factory calibrated at 0.3, 0.5, 1.0, 2.5, 5.0, 10.0 µm variable binning
<b>Flow rate</b>	0.1 CFM (2.83 LPM)
<b>Concentration Limit</b>	10,000,000 Particles/ft³ @ 10% coincidence loss
<b>Battery Run Time</b>	10 hours
<b>Light Source</b>	Long life laser diode
<b>Counting Efficiency</b>	50% @ 0.3 µm; 100% for particles >0.45 µm per JIS
<b>Zero Count</b>	<1 count / 5 minutes (<2 particles/ft³) (per ISO 21501-4 & JIS)
<b>Count Modes</b>	Automatic, manual, real-time meter, cumulative/differential, mass concentration, count or concentration
<b>Count Alarms</b>	1 to 9,999,999 counts
<b>Calibration</b>	NIST traceable
<b>Display</b>	4.3" (10.9 cm) WQVGA (480x272) color touch screen
<b>Printer (Optional)</b>	External thermal printer
<b>Vacuum Source</b>	Internal pump with automatic flow control
<b>Filtered Exhaust</b>	Internal HEPA filter
<b>Number of Channels</b>	6
<b>Custom Size Channels</b>	Calibration for custom size channels available
<b>Audible Alarm</b>	Adjustable built-in alarm
<b>Battery</b>	Removable Li-ion
<b>Battery Recharge Time</b>	4 hours within instrument (<2 hours with external battery charger)
<b>Reports</b>	ISO 14644-1, EU GMP Annex 1, FS 209E
<b>Recipes</b>	50 user-configurable recipes
<b>Communication Modes</b>	RS232, Ethernet and USB
<b>Optional Comms Mode</b>	Wireless 802.11 b/g, RS485
<b>Environmental Sensor</b>	Optional temperature and relative humidity probe 32° to 122°F (0° to 50°C) ±1°F (0.5°C), 15-90% ±2% relative humidity
<b>Alarm</b>	Alarms on counts for all particle sizes, low battery, sensor failure, environmental sensors and flow
<b>Standards</b>	ISO 21501-4 and JIS B9921
<b>Calibration</b>	Recommended minimum once per year
<b>External Surface</b>	High impact injection molded plastic
<b>Dimensions (L x W x H)</b>	10" x 5" x 4.5" (25.4 cm x 12.9 cm x 11.4 cm) includes handle and does not include probes
<b>Weight</b>	2.2 lb (1.0 kg)
<b>Included Accessories</b>	PCC-GW3500 hard-shell carrying case, quick start guide, operating manual on USB flash drive, isokinetic probe, purge filter, battery, belt clip, WolfSense PC data download software, USB cable, power supply & cable
<b>Optional Accessories</b>	PCC-35P security case, printed manual, TRH probe, spare battery, external printer and isokinetic probes
<b>Buffer Memory</b>	45,000 sample records (rotating buffer) including particle count data, environmental data, locations and times. Scrollable on screen or printout
<b>Sample Locations</b>	Up to 1,000 locations 20 characters long and 50 user defined recipes
<b>Sample Time</b>	1 second to 99 hours
<b>Power</b>	110 to 240 VAC 50/60 Hz universal in-line power supply
<b>Operating Conditions</b>	41° to 104°F (5° to 40°C) / 20% to 95% non-condensing
<b>Storage Conditions</b>	32° to 122°F (0° to 50°C) / Up to 98% non-condensing
<b>Warranty</b>	2 years on instrument, 1 year on accessories, no warranty on filters

GrayWolf Sensing Solutions reserves the right to change specifications without notice.



**GRAYWOLF SENSING SOLUTIONS**

6 Research Drive (Worldwide Headquarters)  
Shelton, CT 06484 USA  
Ph. (1)203-402-0477  
800-218-7997



Email: [Salesteam@GrayWolfSensing.com](mailto:Salesteam@GrayWolfSensing.com)

[www.GrayWolfSensing.com](http://www.GrayWolfSensing.com)

✓ Measure Smart



Example ▲

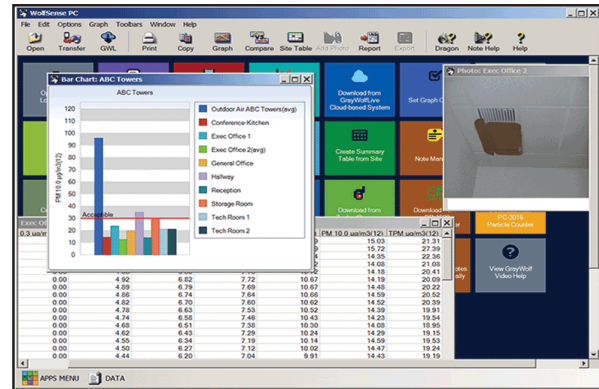
AdvancedSense Screen

(interface enables

GrayWolf's powerful in-situ features for particulate data; audio, photo, text notes and much more).

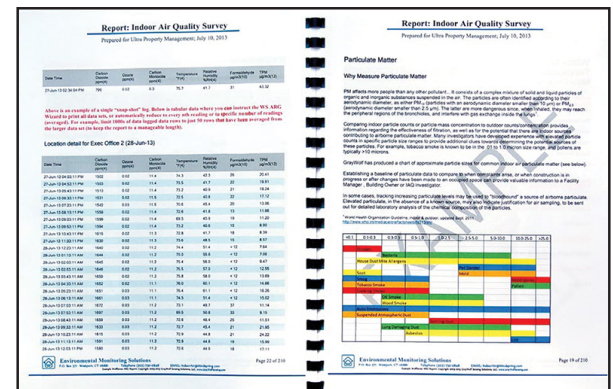
✓ Report Efficiently

Optional PCC-35P Hard-shell Security case with cutouts for AdvancedSense meter, sensor exposure for DSII probe plus space & inlet exposure for internal PC-3500 ▼



Example  
WolfSense  
PC Screen  
data  
transfer  
& analysis  
software  
(supplied as  
standard)

Example  
WolfSense  
ARG report  
(optional  
automated  
report  
generation  
software)



**GRAYWOLF SENSING SOLUTIONS**

Annacotty Industrial Park, Unit 1C  
Annacotty, County Limerick  
V94 PR2Y Ireland  
Ph. (353) 61358044